

# 14-16 GUIDE 2022

**INSPIRE.  
CHALLENGE.  
EMPOWER.**

[WWW.UCM.AC.IM](http://WWW.UCM.AC.IM)

**UCM**   
University College Isle of Man  
Colleish-Ollooscoil, Ellan Vannin  
a College of Further & Higher Education

# UCM 14-16 School Links Programme

## Introduction

University College Isle of Man (UCM) has a long-standing reputation for delivering world-class education on the Isle of Man. We are committed to providing education that will empower students to explore their potential. Our aim is to provide the strongest possible foundation for future careers. Our teaching staff have substantial working experience in their subject related sectors and therefore are the best people to share their professional experience. UCM has four realistic working environments which re-create the setting and atmosphere you would find in an actual workplace. These areas are fully equipped with tools, machinery and technology used by industry. In these dynamic spaces, students can develop and practise skills needed to gain employment.

We have been working in partnership with schools across the Island for over a decade to provide this programme, to encourage and enable progression in education and training. We are committed to continue working together with schools to provide excellence in learning on the Isle of Man.

If you would like further information about this programme, please contact our 14-16 Programme Coordinator on **648200** or email **[mail@ucm.ac.im](mailto:mail@ucm.ac.im)**

**Please note there are limited places on each programme of study.**

## Equality & diversity

We are an inclusive organisation. We work together to eliminate discrimination, promote equality and embrace diversity in all that we do, and have the necessary policies and procedures in place to ensure this. We celebrate the rich diversity of the UCM community, which is made up of people from different cultures and ethnic backgrounds.

## Safeguarding

We have a comprehensive safeguarding policy in place to ensure that UCM is a safe and secure learning environment. All of our members of staff, full-time and sessional, are obliged to undergo regular safeguarding training.



# Engineering

## National Certificate in Engineering Manufacturing (Cambridge OCR Level 2)

### Course location

William Kennish Building / Hills Meadow

### Entry requirements

You must undertake an aptitude test prior to being accepted on this programme. If unsuccessful, you may be able to study a Level 1 Engineering course.

### Course summary

Delivered over two years, this course is for you if you wish to study the processes involved in manufacturing engineered products.

It will provide you with the knowledge and skills required to operate manufacturing tools and equipment. You will use practical skills such as drawing and use specialist machinery such as lathes and milling machines. This course is assessed through one external examination and coursework. You need to have a predicted grade C or above in Maths to be successful on this course.

### Course content

- Engineering materials, processes and production.
- Preparing and planning for manufacture.
- Computer aided manufacture.
- Quality control of engineered products.

### Progression

Upon completion of the qualification, and depending upon Maths and English grades achieved, you may progress to further your studies in Engineering or to A-Levels, or you may wish to consider an Engineering Apprenticeship Programme.





# Child Development & Care

## Award in Child Development & Care (CACHE Level 2)

### Course location

Homefield Road Campus

### Entry requirement

Students will be required to sit an aptitude test prior to being accepted on this programme.

### Course summary

This is a knowledge based course that will give you the foundations to study further towards a qualification that allows you to work with children.

This course is equivalent to one GCSE and is assessed through one external short answer paper examination and coursework.

### Course content

- An introduction to working with children aged 0-5 years.
- Development and well-being 0-5 years.
- Childcare and development 0-5 years.

### Progression

By the time you have completed this course you will be well prepared to make informed choices about further learning or employment opportunities.

Your options will include progression to a Level 3 programme such as A-Levels or Diploma in Childcare (CACHE Level 3). This will give you the opportunity to progress to higher education in areas such as childcare, nursing, teaching, or to employment in the early years service industry.

**“Little Explorers learning space is such a great resource for students studying the childcare course like myself. My advice is to be confident with your choices and also talk to tutors here; they are always more than happy to help you.”**

*Tina Kearsley studied the Diploma in Childcare & Education (Level 3) at UCM and is currently studying BA (Hons) Early Childhood Studies at Edge Hill University.*

# Hairdressing & Beauty Therapy

## Course location

Homefield Road Campus

## Course summary

If you are just starting out and want to gain greater understanding of the hair and beauty industry, or would like to be a supervised assistant in a salon then this course is for you. It will give you a broad introduction to a range of practical skills in the hair and beauty industry. This course is assessed through coursework.

## Examples of course content

The course has been designed to be a fun and interactive introduction to different treatments available in salons. You will be able to combine your skills and knowledge to perform your own services and to assist others in the salon.

Introduction to the hair and beauty sector.

- Presenting a professional image in a salon.
- Shampoo and conditioning hair.
- Themed face painting.
- Styling women's hair.
- Make up.
- Nail art.
- Plaiting and twisting.
- Basic manicure.
- Using temporary hair colour.
- Head massage.

## Progression

Upon completion of this qualification, and depending upon Maths and English grades achieved, you may be able to progress to further study on either the hairdressing or beauty therapy course, or to a supervised employment in the hair and beauty industry.

**“I enjoyed everything about this course, particularly the focus on developing my practical skills and working within a realistic learning environment. It is a wonderful feeling to be skilled in a profession that I have a huge passion for.”**

*Hannah Caley, former UCM Beauty Therapy (Level 3) student is currently working in a local spa.*

# Level 1 Short Course Pathway

## Course location

Homefield Road Campus

## Course summary

This pathway is offered over two years and consists of a variety of short courses, some of which are certified at Level 1.

## Examples of course content

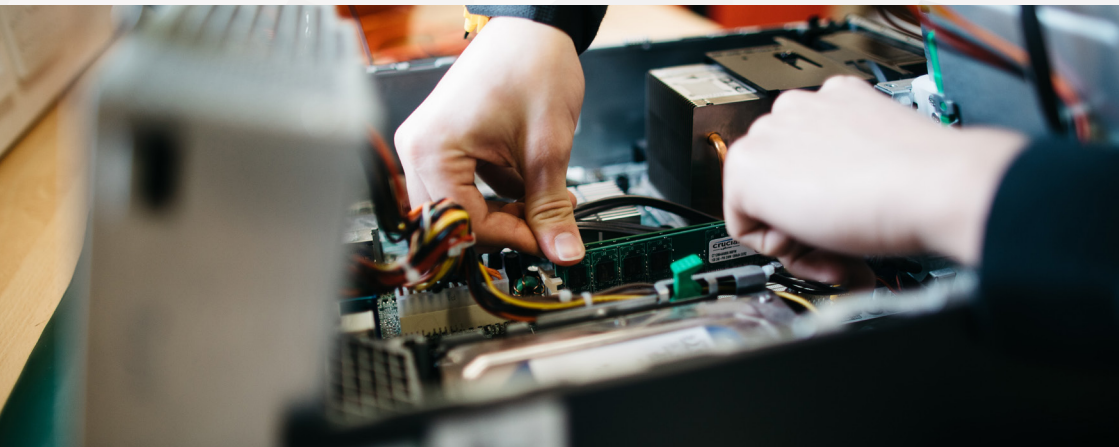
Examples of these courses may include

- Forensics
- Fundraising
- Robotics
- Young Driver Awareness
- Environmental Conservation
- Professional Standards for employment
- Digital Marketing

NB places are limited and the individual courses offered may change subject to UCM staffing and resources.

## Progression

Success on this pathway will support students to progress to an appropriate UCM course in the future.



**01624 648200**  
**MAIL@UCM.AC.IM**  
**WWW.UCM.AC.IM**

Homefield Road, Douglas,  
Isle of Man, IM2 6RB



**UCM**   
University College Isle of Man  
Colleish-Ollooscoll, Ellan Vannin  
*a College of Further & Higher Education*